



# ARES

Espesor / Thickness

12 mm

10 mm

6 mm

4 mm

Acabado / Finishing

DT (Digital Texture)









DTG

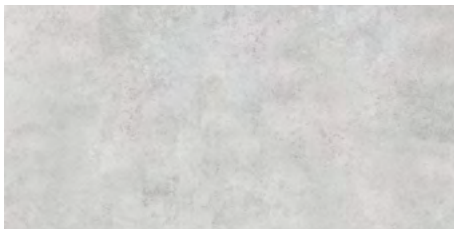
DT GRIP






# ARES

FORMATO FORMAT	COLOR COLOUR	ACABADO / FINISHING			
		12 mm	6 mm R		4 mm (Pieza + Malla / Piece + Mesh)
		DT Digital Texture	DT Digital Texture	DTG	DT Digital Texture
1600 x 3200 mm 63" x 126" 	PIEDRA	✓ 	✓ 	-----	✓ 
1600 x 1600 mm 63" x 63" 		-----	-----	✓ 	-----
1000 x 3000 mm 39" <sup>3</sup> / <sub>8</sub> " x 118" <sup>1</sup> / <sub>8</sub> " 		-----	✓ 	-----	-----




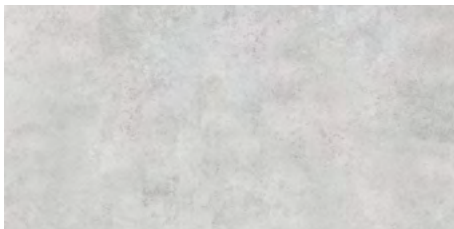
Piedra  
DT (Digital Texture)

# ARES INCISIONES

		ACABADO / FINISHING
		6 mm
FORMATO FORMAT	COLOR COLOUR	DT
1000x3000 mm 39 <sup>3/8</sup> x118 <sup>1/8</sup> " 	PIEDRA	✓


# ARES MICROMOSAICO

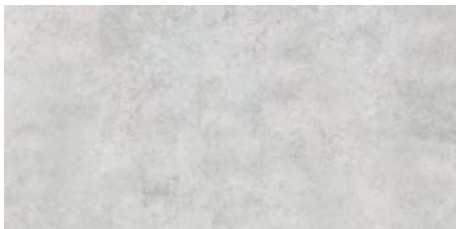
		ACABADO / FINISHING
		6 mm
FORMATO FORMAT	COLOR COLOUR	DT
300x300 mm 11 <sup>3/4</sup> x11 <sup>3/4</sup> " 	PIEDRA	✓



Piedra  
DT (Digital Texture)

# ARES GRIP

		ACABADO / FINISHING	
		10 mm R	
FORMATO FORMAT	COLOR COLOUR	GRIP	
1000x1000mm 39 <sup>3/8</sup> x39 <sup>3/8</sup> 	PIEDRA	✓	



Piedra  
DT (Digital Texture)

# PACKING

## PACKING CABALLETE / PACKING A-FRAME

CABALLETE / PACKING A-FRAME				
Espesor Thickness	Formato Format	Peso tabla completa Weight of whole slab	Piezas por Caballete Slabs per A-Frame	Peso por Caballete Weight per A-Frame
20 mm*	1500x3200 mm / 59"x126"	250 kg	12	3185 kg
12 mm*	1600x3200 mm / 63"x126"	160 kg	20	3385 kg
	1500x3200 mm / 59"x126"	150 kg**	20**	3185 kg**
	1280x3200 mm / 50 <sup>25/64</sup> "x126"	128 kg	24	3260 kg
	1000x3200 mm / 39 <sup>3/8</sup> "x126"	100 kg	24	2540 kg
6 mm R*	1600x3200 mm R / 63"x126"	73 kg	44	3370 kg
	1600x1600 mm R / 63"x63"	37 kg	44	1695 kg
	1200x3000 mm R / 47 <sup>1/4</sup> "x118 <sup>1/8</sup> "	51 kg	60	3260 kg
	1000x3000 mm R / 39 <sup>3/8</sup> "x118 <sup>1/8</sup> "	43 kg	58	2630kg
	1000x2500 mm R / 39 <sup>3/8</sup> "x98 <sup>3/8</sup> "	35 kg	60	2280 kg
4 mm*	1600x3200 mm / 63"x126"	48 kg	66	3355 kg

\* Los datos de packing corresponden a la venta de caballete completo. Los caballetes se facturan siempre y los precios se adaptarán por trimestre según el mercado. Contacte con el departamento comercial para más información.

\* The packing data refers to the sale of a complete A-Frame. Iron A-Frames will always be invoiced and the prices will be adapted per quarter according to the market. Through our Sales Department you can get more information.

\*\* Los datos de packing corresponden al MDi INDUCTION \*\* The packing data refers to MDi INDUCTION

## PACKING CAJÓN DE MADERA / PACKING WOODEN BOX

Espesor / Thickness 6 mm R	CAJÓN DE MADERA / PACKING WOODEN BOX			
FORMATO FORMAT	Peso tabla completa Weight of whole slab	Piezas / Caja Pieces / Box	Cajas / Palet Boxes / Pallet	Kg / Palet Kg / Pallet
1600x3200 mm R / 63"x126"	73 kg	16*	1*	1350*
1600x1600 mm R / 63"x63"	37 kg	20*	1*	820*
1200x3000 mm R / 47 <sup>1/4</sup> "x118 <sup>1/8</sup> "	51 kg	20	1*	1175*
1000x3000 mm R / 39 <sup>3/8</sup> "x118 <sup>1/8</sup> "	43 kg	20*	1*	960*

\* Los datos de packing corresponden a la venta de pallet completo. Los cajones se facturan siempre y los precios se adaptarán por trimestre según el mercado. Contacte con el departamento comercial para más información.

\* The packing data refers to the sale of a complete pallet. Wooden boxes will always be invoiced and the prices will be adapted per quarter according to the market. Through our Sales Department you can get more information.

## PACKING PALLET DE MADERA / PACKING WOODEN PALLET

Espesor / Thickness 10 mm R	PALLET DE MADERA / PACKING WOODEN PALLET			
FORMATO FORMAT	Peso pieza Weight piece	Piezas / Caja Pieces / Box	Cajas / Palet Boxes / Pallet	Kg / Palet Kg / Pallet
1000x1000 mm R / 39 <sup>3/8</sup> "x39 <sup>3/8</sup> "	23 kg	2*	24*	1175*

Los pesos aquí reflejados pueden sufrir ligeras variaciones en función del lote de producción.  
Weights shown here may slightly vary depending on the production lot.